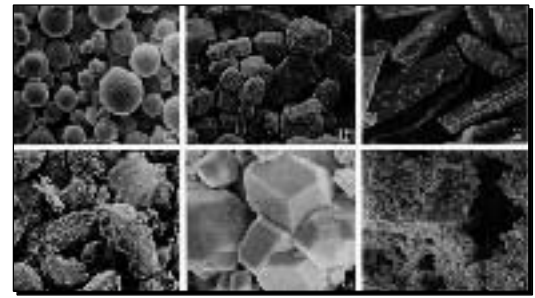


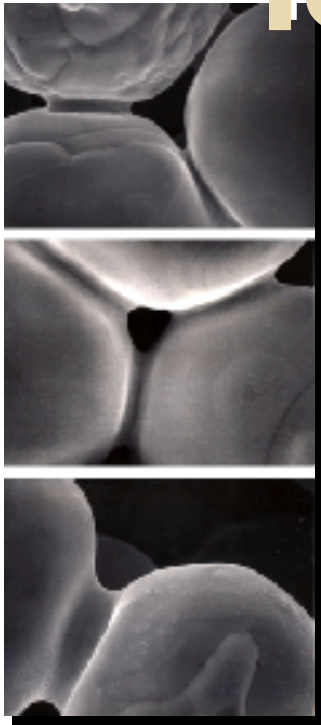
Powder Metallurgy:

Sintering converts powder into strong, precise, high-performance shapes by changing particle bonds, surface areas, chemical properties, and microstructure.



Powders at micro-scale.

μ Techniques for multiple scales



Sintered bonds between particles < 50 μm in size.

Clockwise from top right: liquid-phase sintered tungsten & copper, sintered bevel gears, stainless steel filtration designs, & microelectronic packages.

